



Council of Superintendents

December 7, 2022

General Updates from DLS

- FAQ – Graduation Requirements
- Competency Guidance by Late Spring or Early Summer
- CTE Survey – Technical Assistance Today – 3:30-4:30 pm
- School Improvement Work Group
- DLS Division Retreat – December 16
- ESSER III Applications Due

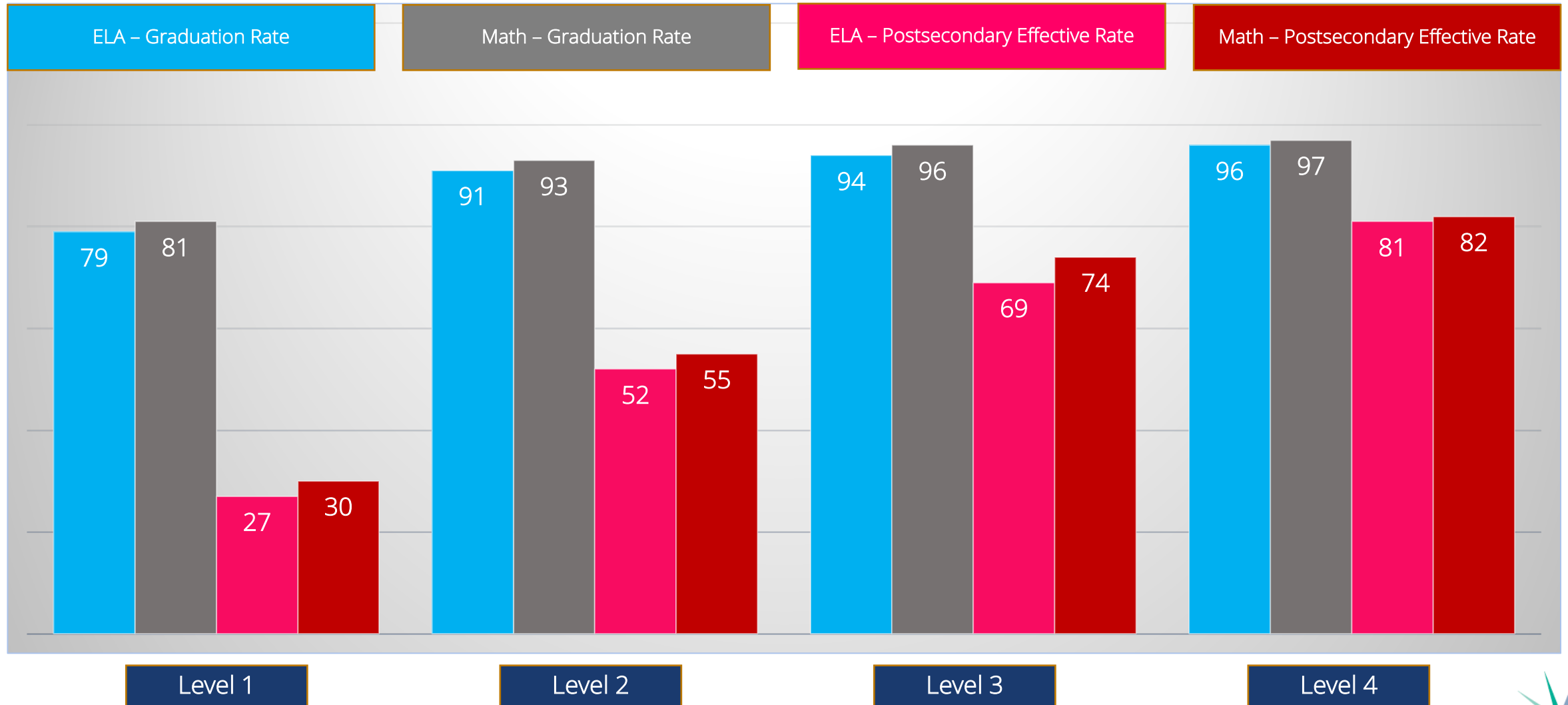


Today's Session Objective

- Review the components of the Kansas Balanced Assessment System with an emphasis on the Interim Assessments and related resources.



Kansas State Assessment Performance Correlated with Graduation Rates and Postsecondary Effective Rates
 2017 and 2018 10th Graders (Approximately 70,000 Students)
 English Language Arts & Math



Performance Level Descriptors

- Level 1 – Limited
 - Level 2 – Basic
 - Level 3 – Effective
 - Level 4 – Excellent
-
- Students demonstrates a(n) _____ ability to use and understand the skills and knowledge needed for postsecondary success.



Kansas State Assessment Performance Correlated with Graduation Rates and Postsecondary Effective Rates

2017 and 2018 10th Graders (Approximately 70,000 Students)

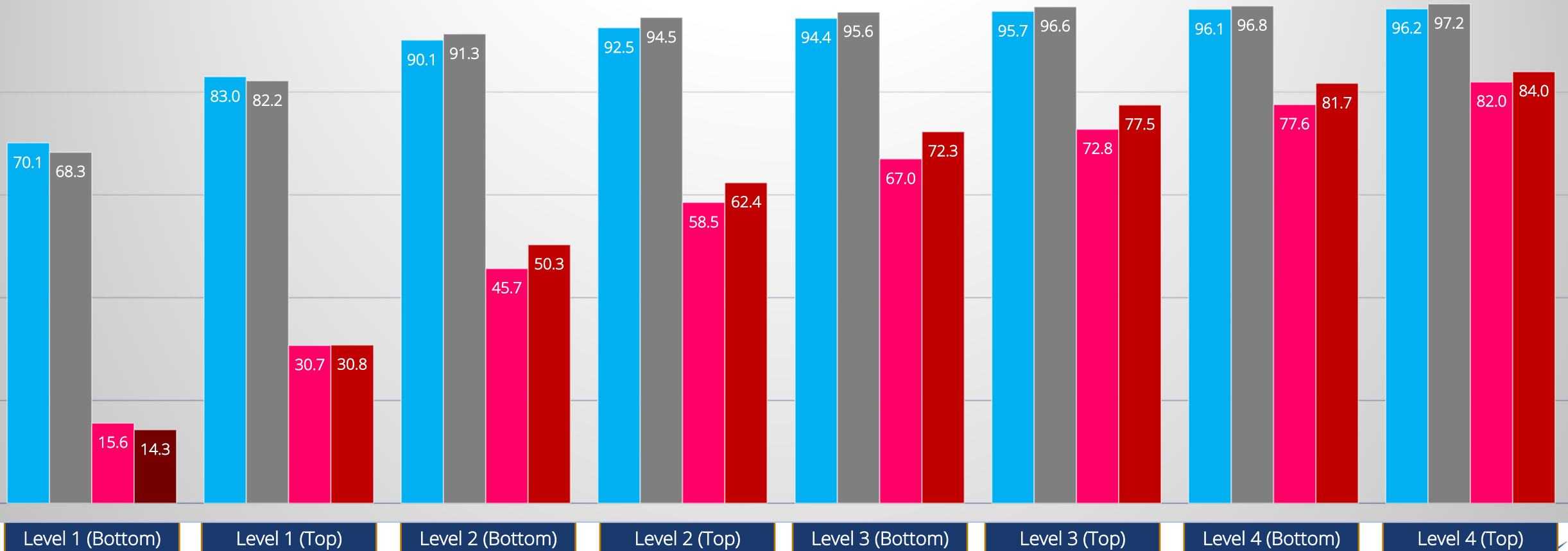
English Language Arts & Math

ELA – Graduation Rate

Math – Graduation Rate

ELA – Postsecondary Effective Rate

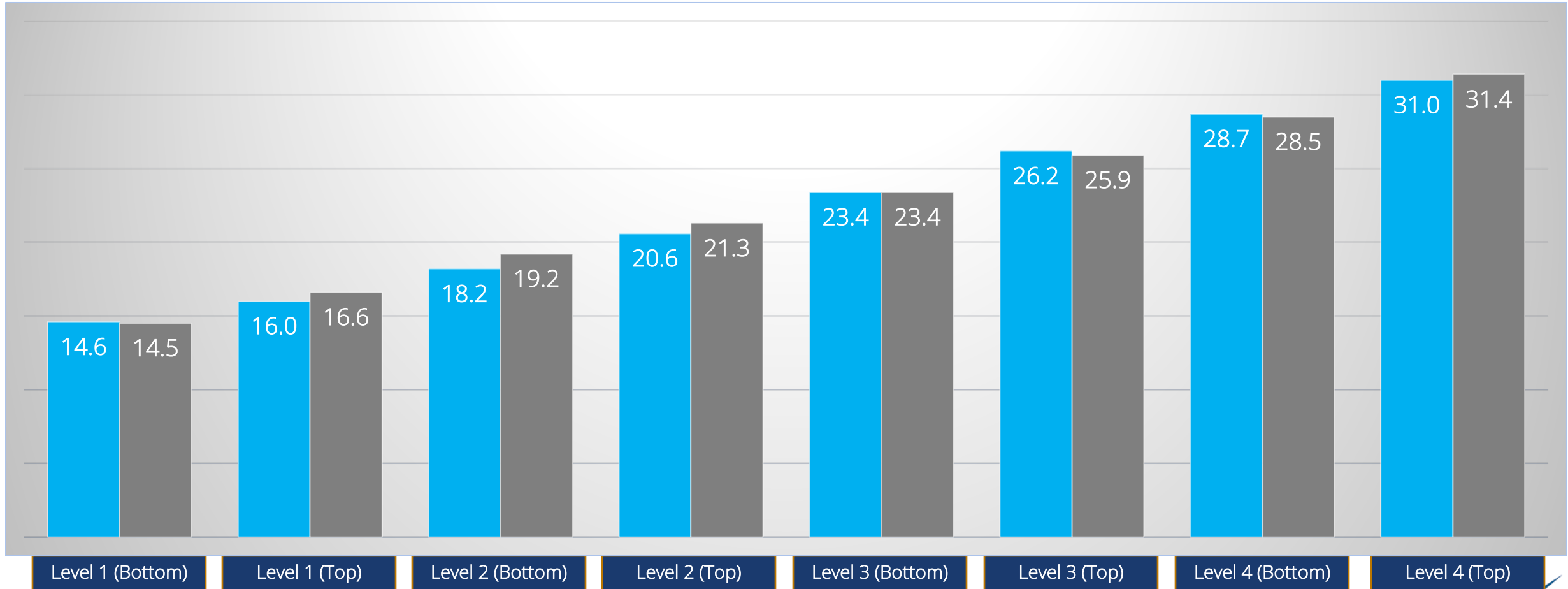
Math – Postsecondary Effective Rate



Kansas State Assessment Performance Correlated with Mean ACT Scores
2017 10th Graders
English Language Arts & Math

ELA – ACT Mean Score

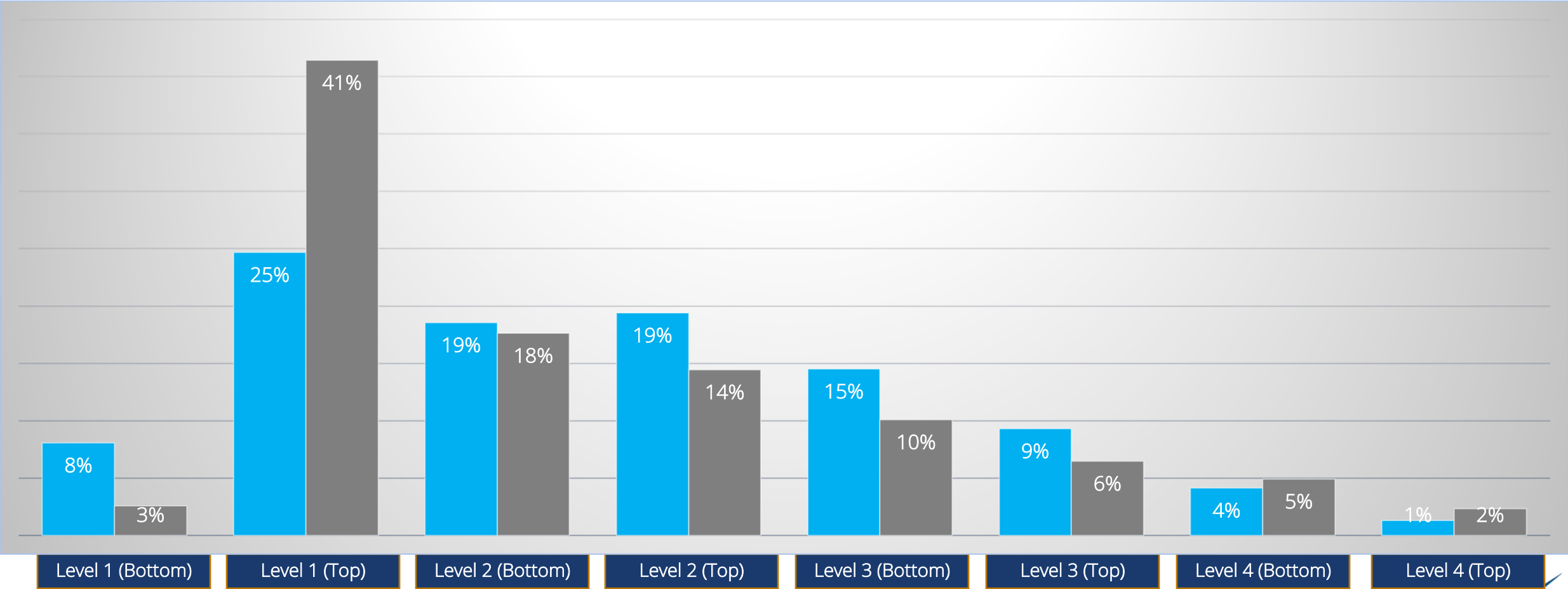
Math - ACT Mean Score



Kansas State Assessment Performance
2017 and 2018 10th Graders
English Language Arts & Math

ELA Percentages

Math Percentages



What does our data tell us?

- Level 2, 3, and 4 students are positioned for postsecondary success.
- Level 1 students have academic limitations that reduce postsecondary options and opportunities.
- The largest percentage of students fall into the top half of Level 1 on the 10th grade Math and ELA assessments.



Quick Check-In...

- How do you think your students will perform on the summative state assessments this year?
 - Will our drop in performance continue?
 - Have we bottomed out?
 - We will start to see a turn-around?



MOBILIZING TO ADDRESS & ACCOUNT FOR ACADEMIC LIMITATIONS

ADDRESS

- Student Attendance
- Standards Alignment (CIA)
- Balanced Assessment System**
- Early Literacy and Numeracy
- MTSS (Core Emphasis)
- Kindergarten Readiness

ACCOUNT FOR

- Individual Plans of Study
- Career & Technical Education
- Kansans Can Competencies
- Civic Engagement
- Postsecondary Readiness Assets
- Dropout Prevention



Balanced Assessment System

Formative Tools

Planned, instructionally-embedded, and ongoing

Interim Assessments

Intentionally developed and administered at particular intervals of the school year

Summative Assessments

Provide evidence of learning and mastery of standards at end point in time

ALL BASED ON KANSAS STANDARDS



BALANCED ASSESSMENTS

FORMATIVES

Planned, instructionally embedded, and ongoing processes used by all students and teachers that:

- Provide feedback to students
- Inform and guide instruction
- Monitor learning
- Focus on state standards

Frequency:

- Ongoing, Minute by Minute
- Day to Day

Reports:

- Student Test Report, Test Summary Report, Test Item Report

INTERIMS

Intentionally developed and administered to students at particular intervals of the school year that:

- Measure understanding of concepts of particular skills
- Inform and guide instruction
- Provide feedback to students
- Focus on state standards
- Available in Math and ELA

Frequency:

- 3 Windows per Year

Reports:

- Student Report, Score Report, School Cluster Report, District Report, District Cluster Report

SUMMATIVES

Provide evidence of learning and mastery of standards for all stakeholders at an end point in time that:

- Summarize what students know and do not know
- Evaluate curriculum and programs
- Help drive professional learning
- Focus on state standards

Frequency:

- March 20-April 8

Reports:

- Student Score Report, School Summary Report, District Summary Report



What are Interim Assessments?

- Used periodically throughout the school year to measure student's understanding of concepts and mastery of particular skills
- Inform and guide instruction
- Provide feedback to students
- Focus on standards
- Predicts performance on summative assessments



KAP – Interim Assessments

- Predictive Interim Assessments in English Language Arts (ELA) and Mathematics
- Grades 3-8 and 10
- Aligned to the state curriculum standards
- Allow educators to evaluate student's knowledge and skills relative to specific set of academic goals
- Inform decisions at classroom, school, and district level
- Given online via Kite Student Portal



KAP Predictive Interim Assessment

- Testing Window for 2022-2023
 - Window 1: 9/19 – 9/30
 - Window 2: 12/5 – 12/16
 - Window 3: 1/30 – 2/10
- If all three Predictive Interim assessments are administered, a student is exposed to all content standards of the summative assessment.



KAP Predictive Interim Assessment

- Each predictive interim assessment:
 - Has between 17-25 questions and is administered online via the Kite Student Portal
 - Includes traditional and technology-enhanced/technology-enabled items that parallel the summative assessment
 - Provides items that include a range of depth-of-knowledge levels



KAP Predictive Interim Reports

- **Student Report:** Individual reports for each student that attempted the test
- **School Report:** Summary showing how students in the school performed on each question
- **School Cluster Report:** Summary showing the school average performance compared to state averages
- **District Cluster Report:** Summary showing the district average performance compared to state averages

- Reports available after each testing window closes in Kite Educator Portal



KAP Predictive Interim Resources

- [Understanding the Predictive Interim School and District Cluster Summary Reports \(ksassessments.org\)](https://ksassessments.org)
- [Understanding the KAP Predictive Interim Score Report \(ksassessments.org\)](https://ksassessments.org)
- [Scoring & Reporting | Kansas Assessment Program \(ksassessments.org\)](https://ksassessments.org)



KAP Predictive Interim Resources

Grade specific cluster maps for 3-8 and 10th grade

- ELA- [Assessment Development | Kansas Assessment Program \(ksassessments.org\)](#)
- Math- [Assessment Development | Kansas Assessment Program \(ksassessments.org\)](#)



KAP Predictive Interim Training Resources

- [Introduction to the Kansas Assessment Program Predictive Interim Assessment - Overview \(ksassessments.org\) Module](#)
- [Predictive Interim Cluster Mapping \(video\)](#)

